

Chesapeake Public Schools

RESPONSIVE RETURN



**PREPARING TO REOPEN SCHOOLS FOR THE
2020-21 SCHOOL YEAR**

OUR GOALS

1. To **safely** bring our students and staff back to school.
2. To outline safety measures and mitigation strategies for **safe, on-campus learning**.
3. To provide families with **two options** to meet the educational needs of their children.



GUIDING PRINCIPLES

1. Does this adhere to federal, state, and local **policies and guidelines**?
2. Does this protect the **physical safety** of students and staff?
3. Does this support the **emotional well-being** of students and staff?
4. Does this provide **equitable access and opportunities** throughout the district?
5. Does research or professional literature support this as a **best practice**?
6. Does this prioritize **student achievement** for all?
7. Does the district have the **capacity to implement and sustain** this?



RECOVER, REDESIGN, RESTART 2020



- Virginia Department of Education (VDOE)
- Recommendations for school leaders within the parameters set forth by Governor Northam
 - Limitations on who can attend
 - Strict social distancing measures
 - “New normal” operations to be defined by future guidance
- Requirements for public schools in Virginia
 - Health Plan
 - Instructional Plan

RECOVER, REDESIGN, RESTART 2020

Phase 1

- Special education students
- Group gatherings = 10
- **6-foot separation**
- **Daily health screenings**
- **Cloth face coverings**
- Extracurricular activities prohibited

Phase 2

- PK-3, English Learners
- Group gatherings = 50
- **6-foot separation**
- **Daily health screenings**
- **Cloth face coverings**
- Extracurricular activities limited

Phase 3

- All students
- Group gatherings = 250
- **6-foot separation**
- **Daily health screenings**
- **Cloth face coverings**
- Extracurricular activities limited



CONSIDERING OPTIONS

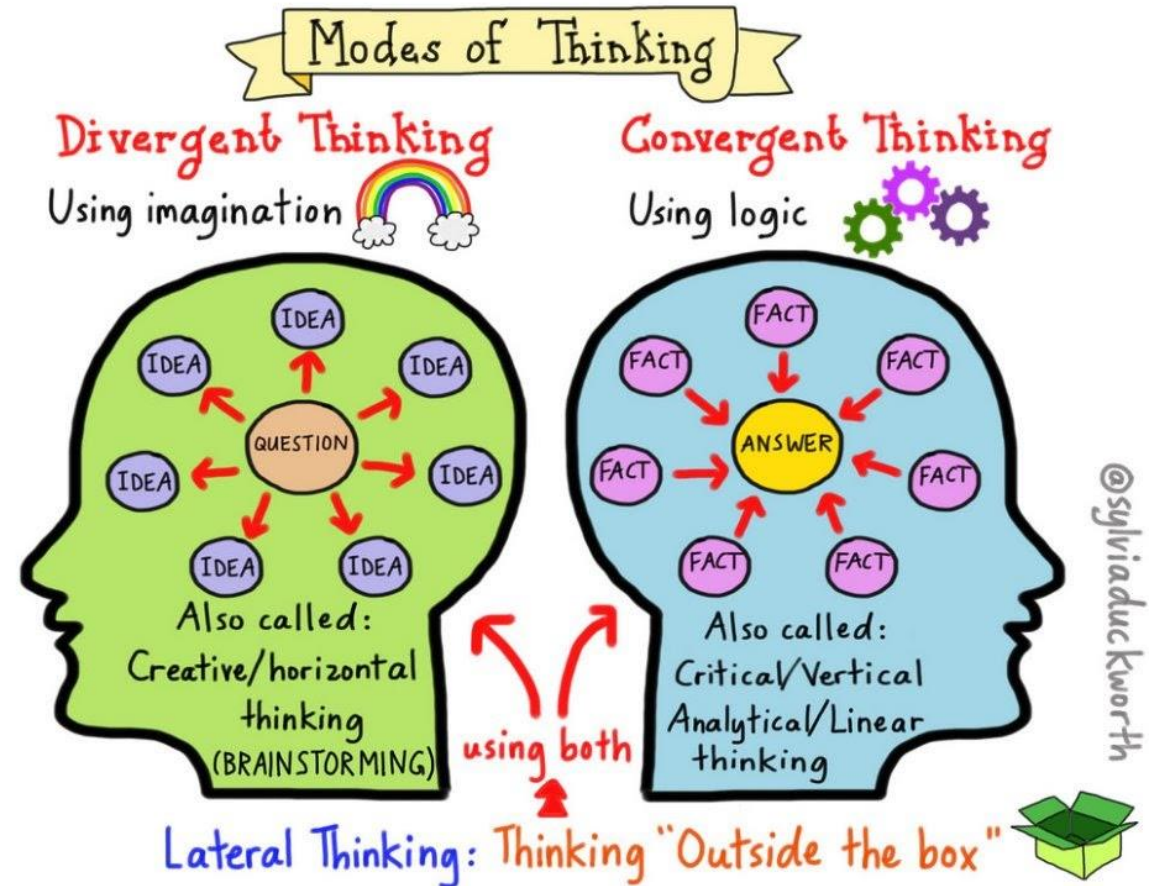
VDOE Guidance

- Limitations on who can attend
- Strict social distancing measures
- “New normal” operations to be defined by future guidance

Can we support a full return?

Sample Options

- Elementary on campus, secondary online
- Half days
- Blended learning
 - Alternating days
 - Alternating weeks
- Online learning



STAKEHOLDER FEEDBACK



Return-to-School survey, June 11-18, 2020

Focus groups

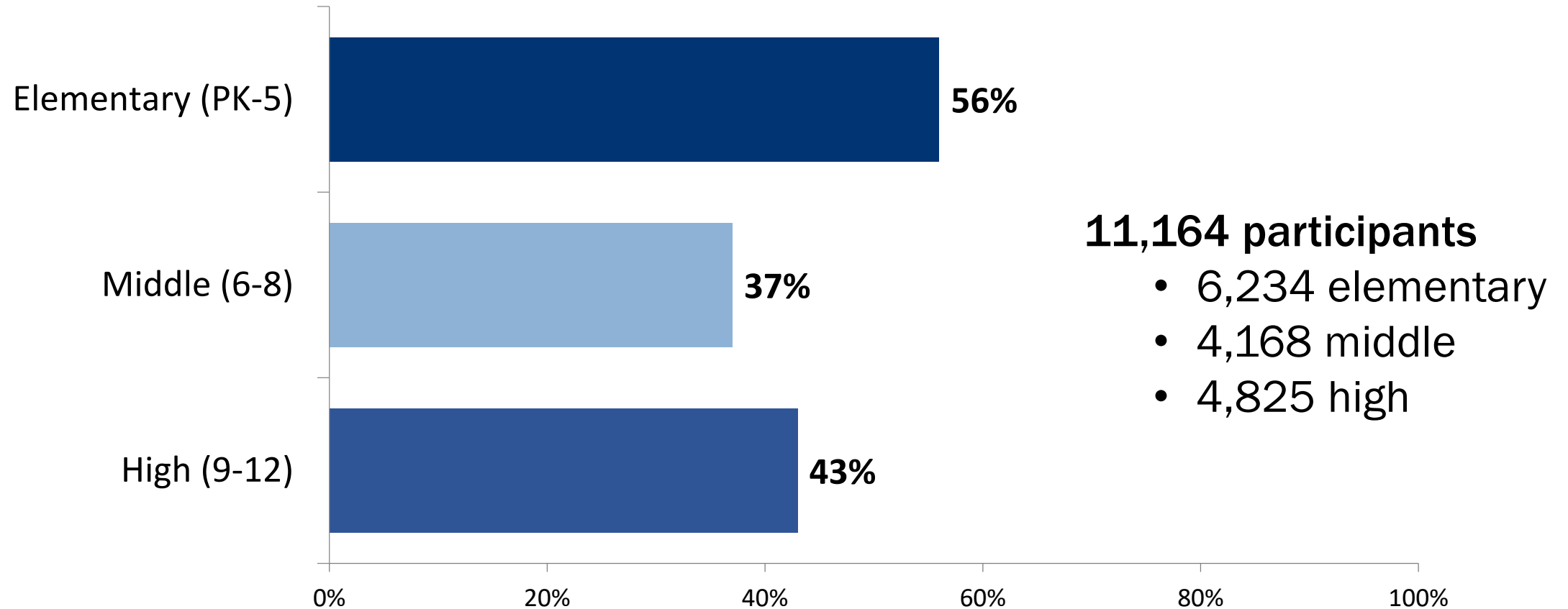
Other sources

How does our school community feel about...

- Returning to school
- Recommended mitigation strategies
- Online learning
- Blended (some online, some on campus) learning

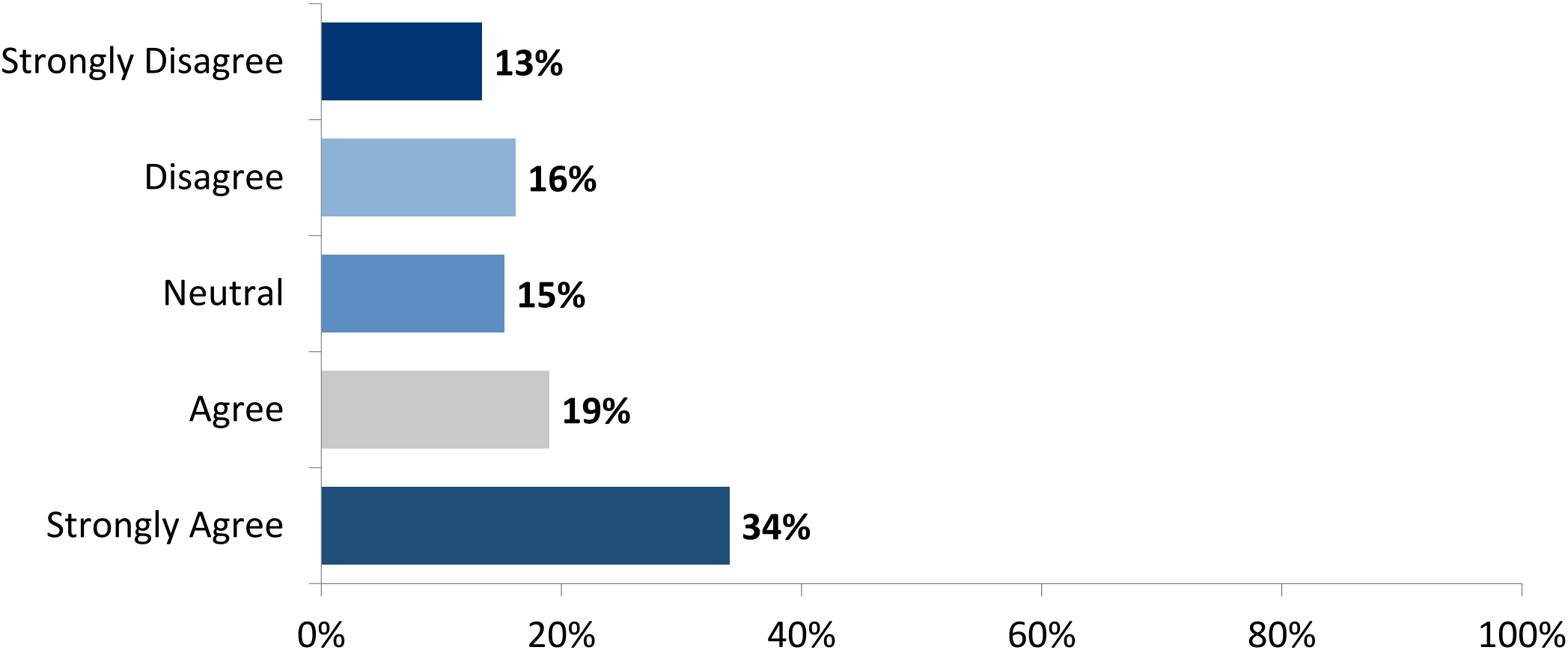
PARENT SURVEY

What school level(s) will your child(ren) be enrolled at in the fall? Check all that apply.



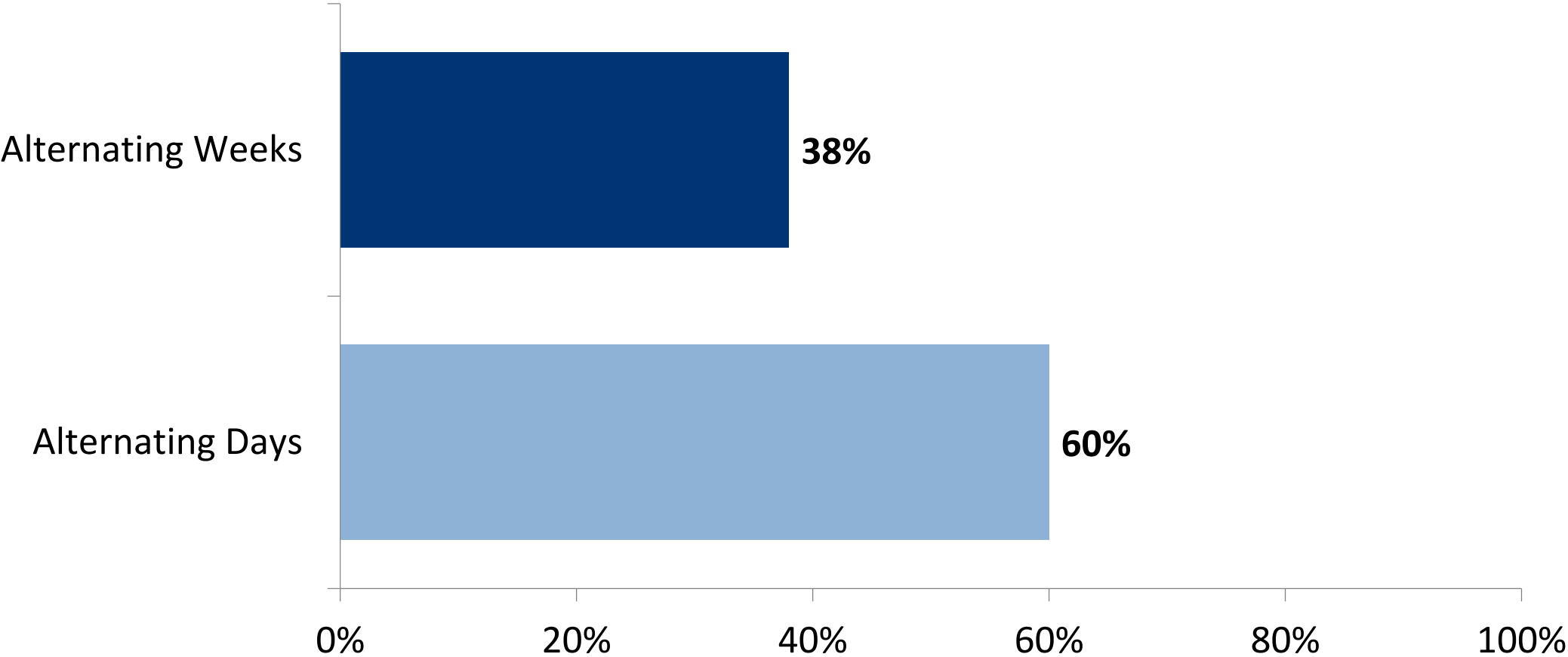
PARENT SURVEY

I would feel comfortable sending my child to school every day with additional health/safety requirements in place.



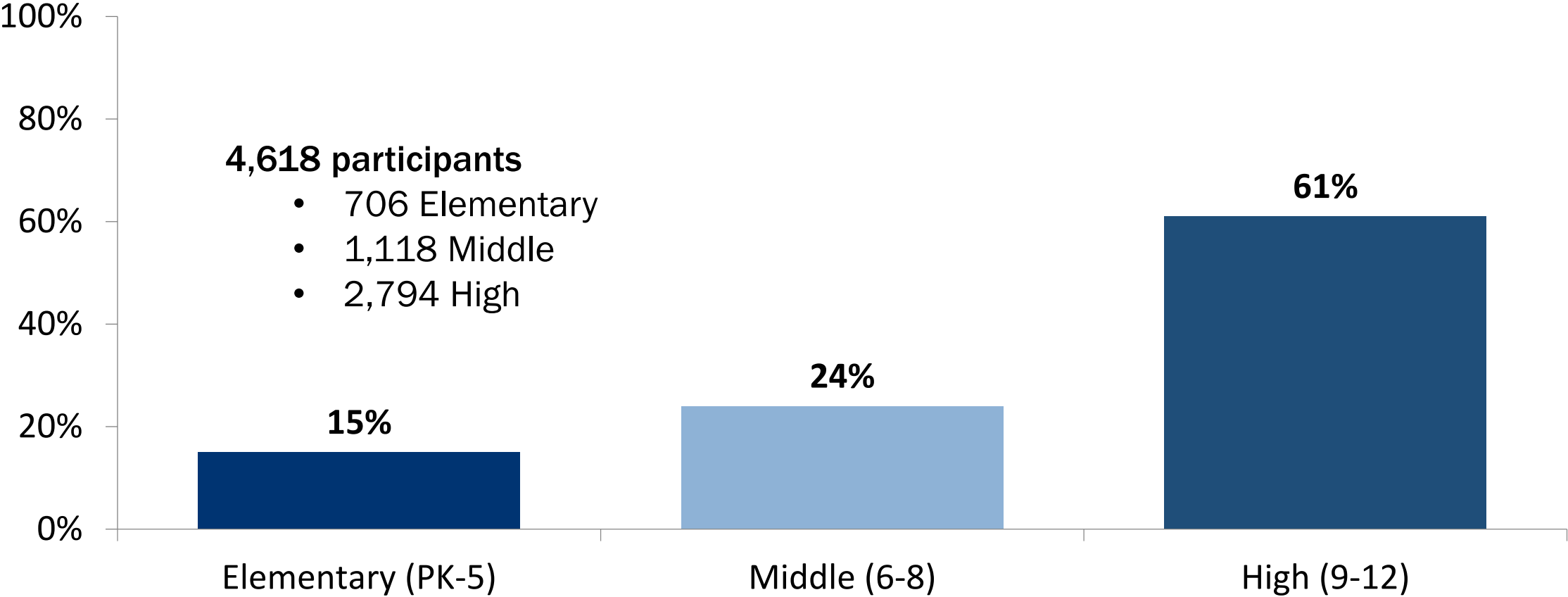
PARENT SURVEY

If schools are not able to resume full face-to-face instruction in the fall, which alternative scheduling model would you prefer?



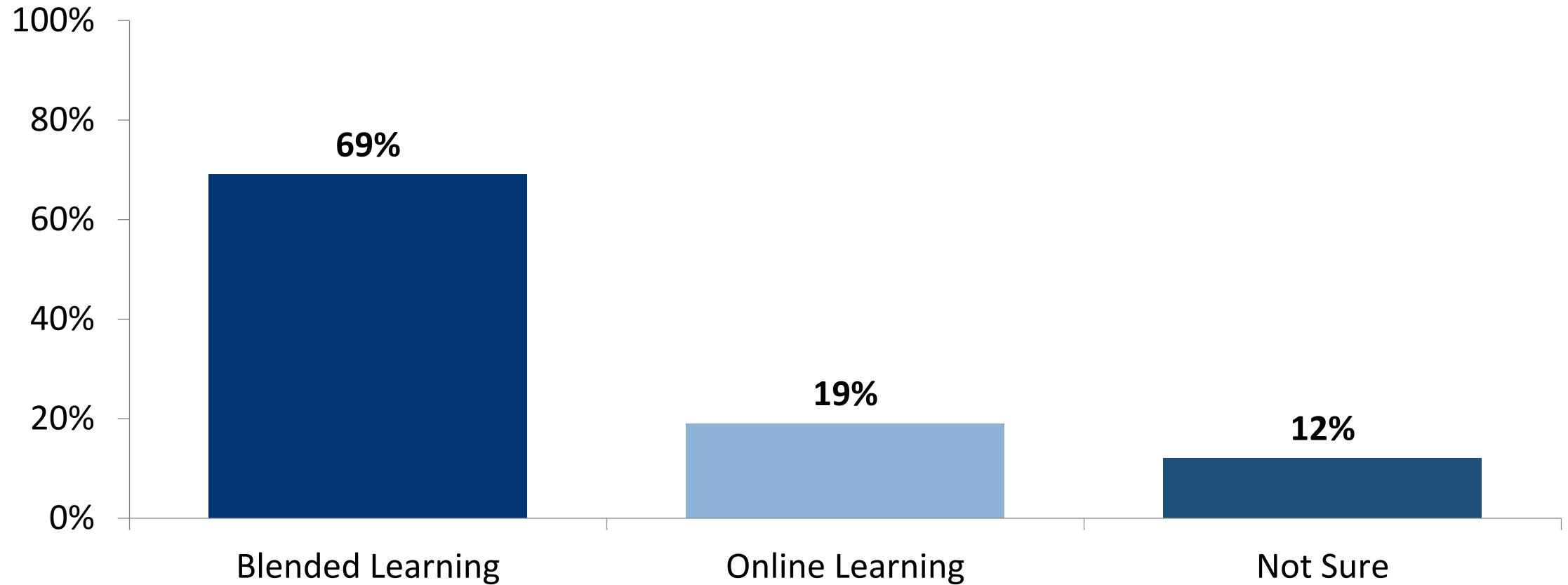
STUDENT SURVEY

Which school level will you be attending in the fall?



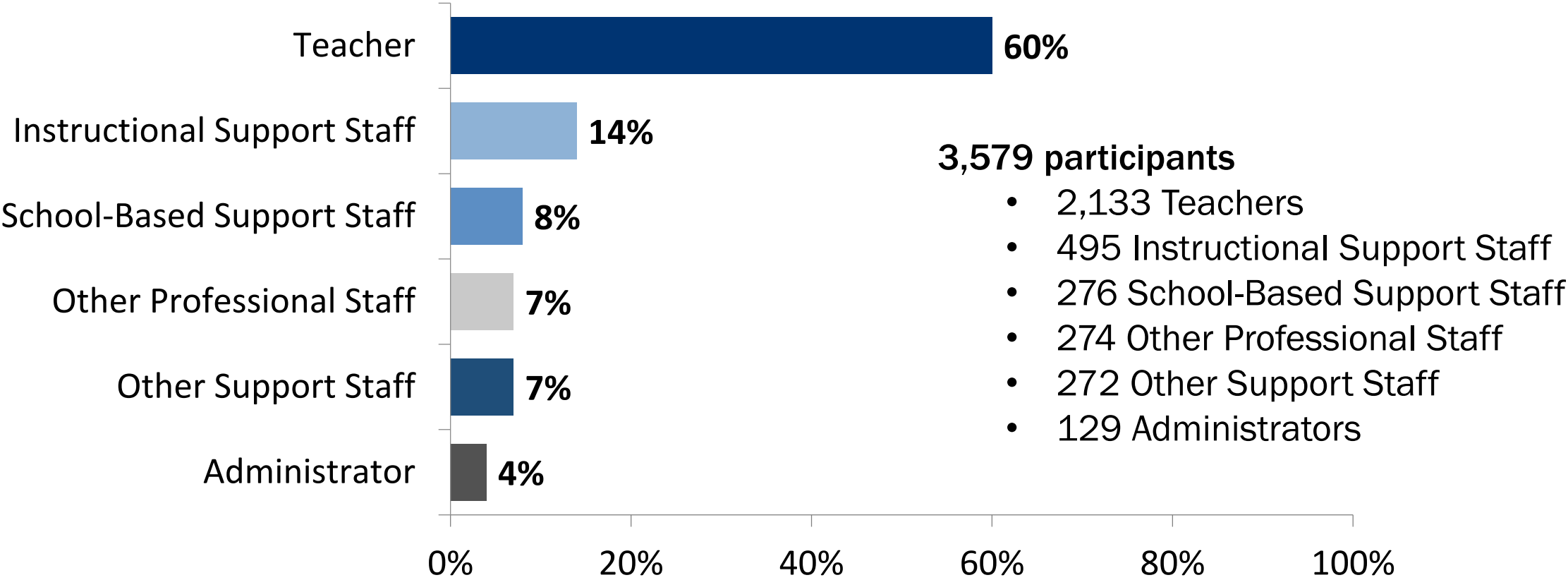
STUDENT SURVEY

If we are unable to go back to regular school every day, which of the following would you prefer?



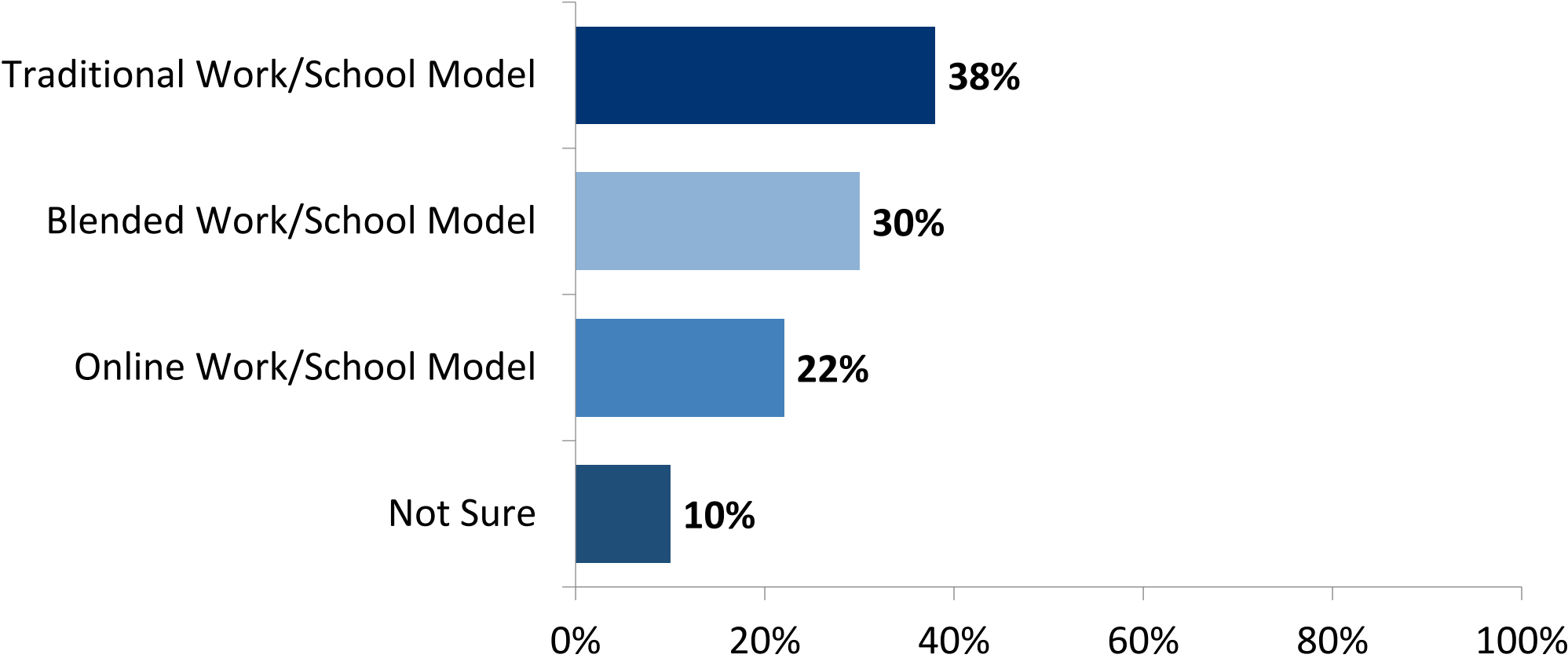
EMPLOYEE SURVEY

Which of the following best describes your position in Chesapeake Public Schools?



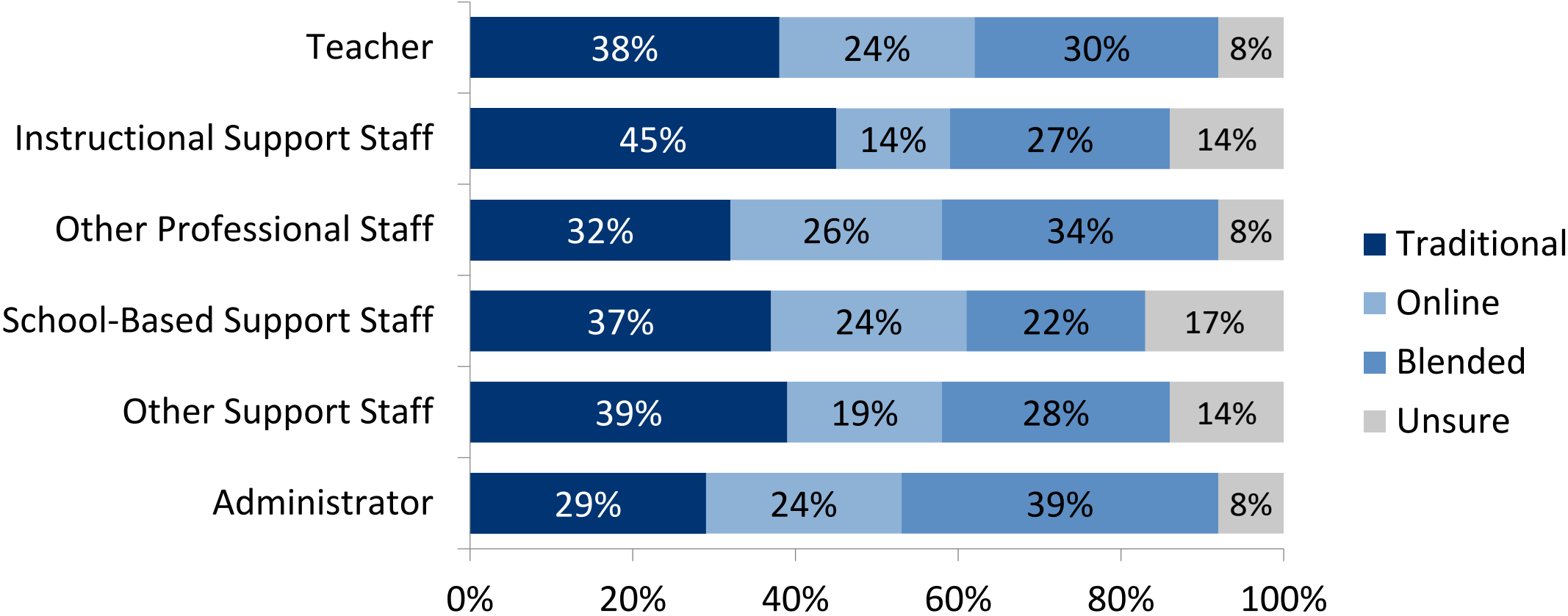
EMPLOYEE SURVEY

Which scenario would you most prefer for reopening schools in the fall?



EMPLOYEE SURVEY

Which scenario would you most prefer for reopening schools in the fall?



CONSIDERING MULTIPLE PERSPECTIVES

11,878 Survey comments

- 7,477 Parents
- 2,524 Employees
- 1,877 Students

437 participants, 40 focus groups

- 368 employees
- 40 parents
- 29 students

Other sources

- Dialogues (Let's Talk)
- Emails, messages, phone calls
- Public comments



CONSIDERING MULTIPLE PERSPECTIVES

“To be fair to ALL students, we have to have a **full return** to school.”

“Our family is 100% comfortable with our child returning to school with **zero modifications** in the fall.”

“For me, **returning to work means having to choose** between my job and my husband's life.”

“I am a **high-risk parent** and I FEAR having my child bring this disease home to me.”

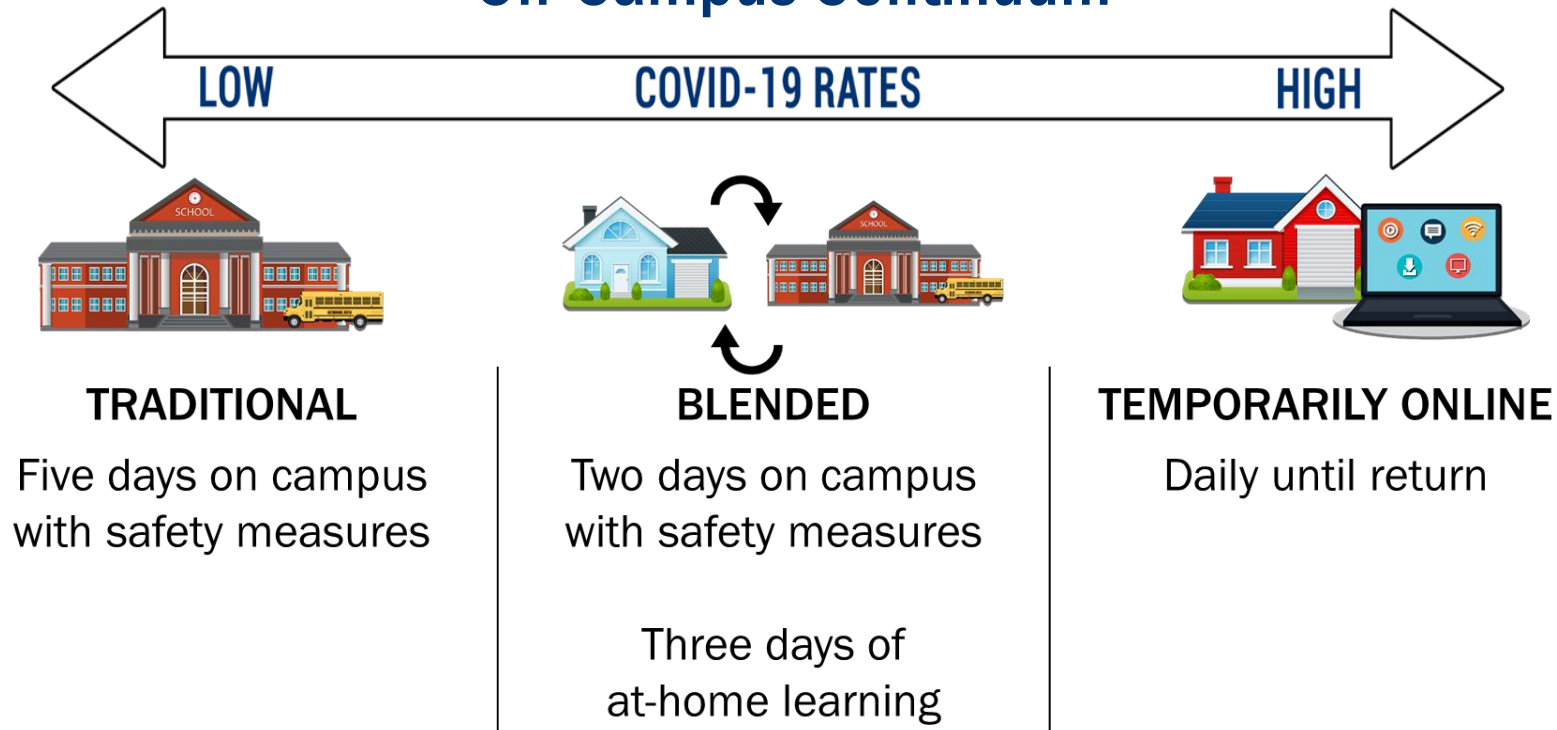
“A plan to return would be more considerable for the **second half of the year.**”

“Please, **no masks** in school.”



RETURNING TO LEARNING: FAMILY CHOICE

OPTION 1: On-Campus Continuum



OPTION 2: 100% Online



OPTION ONE: ON-CAMPUS CONTINUUM

Instructional model will be dependent on health and safety conditions.



TRADITIONAL

Five days on campus
with safety measures



BLENDED

Two days on campus
with safety measures

Three days of
at-home learning



TEMPORARILY ONLINE

Daily until return

OPTION ONE: ON-CAMPUS CONTINUUM



TRADITIONAL

Five days on campus
with safety measures

- Cloth face coverings
 - Required for employees and middle/high students
 - Recommended for elementary students
- Physical distancing to the greatest extent possible
- Health screenings upon entry
- Student interaction limited
- Cleaning/sanitization practices
- Hand-washing/hygiene practices
- Meals in classrooms
- Transportation provided, face coverings required

OPTION ONE: ON-CAMPUS CONTINUUM



BLENDED

Two days on campus
with safety measures

Three days of
at-home learning

- Two days on campus with safety measures
- Three days of at-home learning
 - Online activities
 - Paper/pencil activities
- Online learning support one day per week
 - Online office hours
 - Small group online interventions
 - Collaborative planning/professional development
- Alternating days
- Some students may attend additional days

OPTION ONE: ON-CAMPUS CONTINUUM



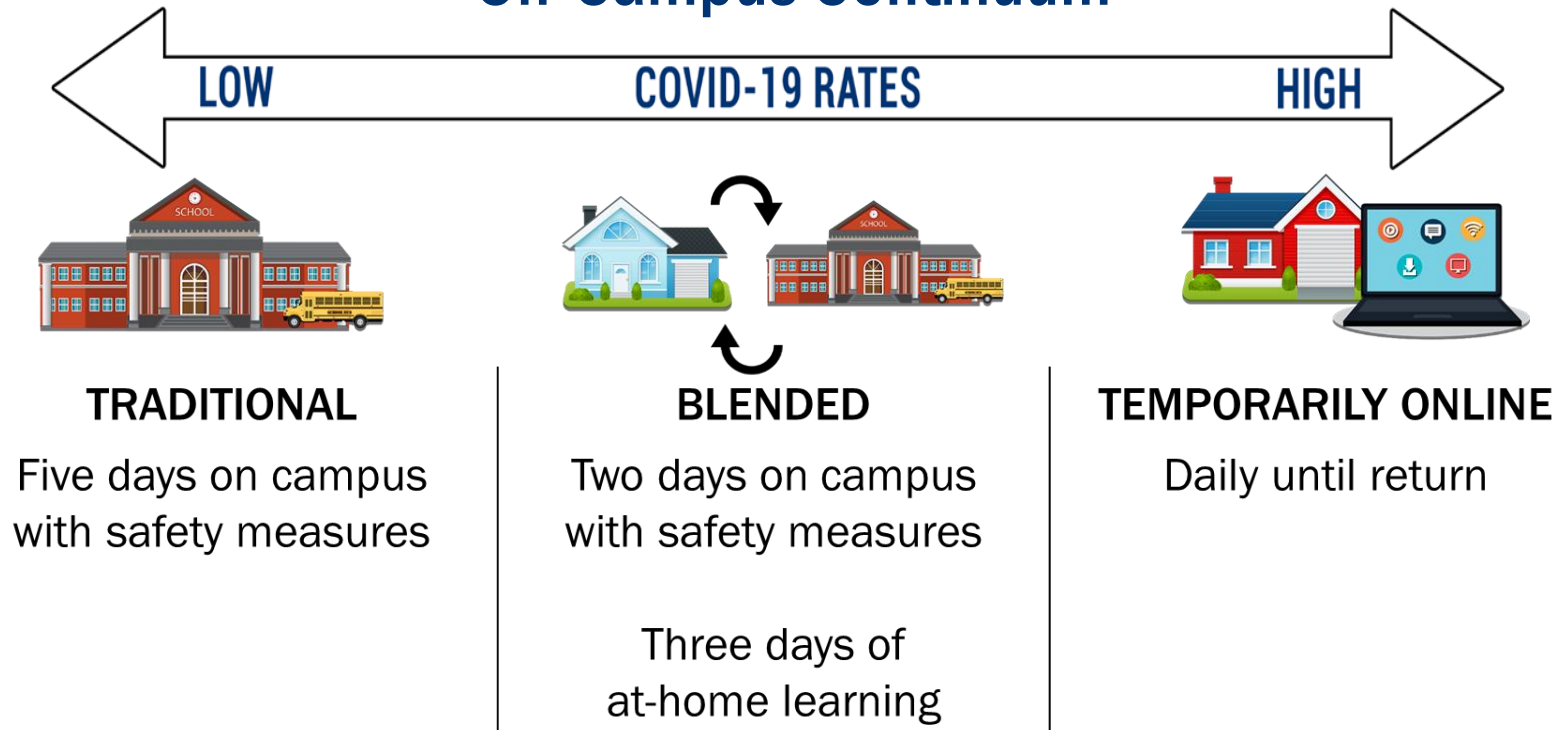
TEMPORARILY ONLINE

Daily until return

- Online learning five days per week
 - Scheduled, teacher-led learning
 - At-home online learning
 - At-home activities (online or paper/pencil)
- Instructional support
 - Weekly online office hours
 - Emails & phone calls
 - Online intervention sessions, as needed
- Meals provided at distribution sites

RETURNING TO LEARNING: FAMILY CHOICE

OPTION 1: On-Campus Continuum



OPTION 2: 100% Online



OPTION TWO: *Chesapeake Online*

- Grades K-12
- Courses are not self-paced
 - Scheduled, teacher-led learning
 - At-home online learning
 - Some elective courses may not be available
- Instructional support
 - Online office hours
 - Emails & phone calls
 - Online intervention sessions



OPTION TWO: *Chesapeake Online*

Elementary

- Teacher-led instruction
 - Approximately 1-2 hours/day (K-2)
 - Approximately 1.5-2.5 hours/day (3-5)

Middle and High

- Teacher-led instruction
 - Approximately 30-45 minutes/day, for each course



OPTION TWO: *Chesapeake Online*

- Maintain affiliation with home school
 - Communications
 - PTA/PTSA
 - Sports and activities
- Meals provided at distribution sites
- Some assessments may be on campus



NOTE: This option requires a semester-long commitment (through February 2, 2021).

RETURNING TO SPORTS & ACTIVITIES

- Select sports and extracurricular activities will resume at the high school level with certain restrictions and mitigation strategies in place.

- Conditioning only:

- Fall Cheerleading
- Cross Country
- Golf
- Field Hockey
- Volleyball
- Football



- Other activities:

- Marching Band
- Color Guard
- Dance Team
- Step Team



- Games and scrimmages not permitted (including summer leagues)
- Transportation is not provided

MAKING YOUR CHOICE

- Message to families
 - US mail
 - Email
- Responsive Return-to-School website
 - Overview of options
 - Link to the full plan
 - Frequently asked questions
- Virtual Q & A family forums
 - 6:00 p.m. on July 13, 16, & 20
 - 12:00 p.m. on July 20



- Contact Us
 - Online form (Let's Talk)
 - Email
 - Phone

MAKING YOUR CHOICE

- Learning Preference:
 - Option One: On-Campus Continuum
 - Option Two: *Chesapeake Online* (Semester-long commitment)
- Access to technology
- Internet access
- Transportation needs
- Family support



July 9, 2020 – July 21, 2020



Returning to Learning: Family Choice

NEXT STEPS



July 7, 2020 – Employee status check begins

- Return-to-work status verification
- Health concerns/requested accommodations
- Employees respond by July 17, 2020

July 7, 2020 – Application for *Chesapeake Online* opens

- Online-only teaching positions
- Internal candidates only
- Information sessions
 - July 8, 2020, at 11:00 a.m.
 - July 9, 2020, at 5:00 p.m.

July 9 – 21, 2020 Family Choice Window

July 27, 2020 – School Board meeting at 6:00 p.m.

- Where will we begin on the continuum?

Questions?