

# Water Supply Dashboard Update

**Nicholas Winkelmann, P.E.**  
**Interim Chief Operations Officer**  
**October 21, 2025**



# Water Supply Dashboard Projections

- Current Projection
- Scenario 1 w/ assumptions and qualifying conditions
- Scenario 2 w/ assumptions and qualifying conditions
- Scenario 3 w/ assumptions and qualifying conditions

# Water Supply Scenarios

## Current Projection

**All scenarios include the following baseline conditions:**

- 2024 water supply demand and watershed inflow
- Watershed inflows updated bi-weekly using USGS gauge data
- Supply Sources:
  - Mary Rhodes Pipeline (MRP) at 70 MGD
    - Reduced partially for planned maintenance interruption
    - No additional MRP interruption
  - Eastern Nueces Well Field (Eastern WF) - 10 MGD starting Oct 2025
    - 7% channel loss in river
    - No interruptions to the Nueces Well Field Operations

Current Water Supply projections  
using the baseline conditions

Level 1 Water Emergency*	Western Supplies are Empty	
	Choke Canyon	Lake Corpus Christi
November 2026	January 2027	April 2027

**\*180 days until supply will not meet demand**

# Water Supply Scenarios

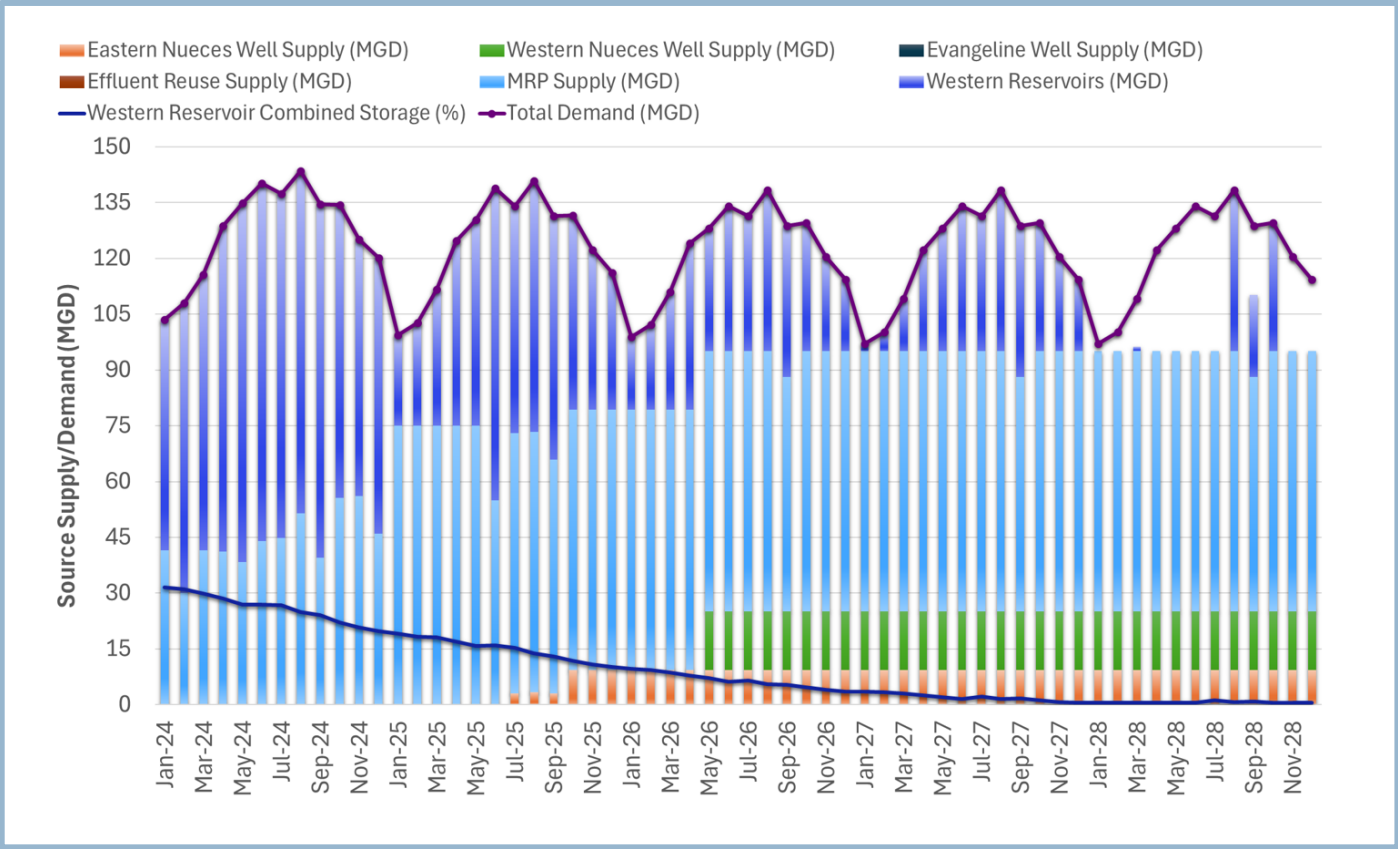
## Scenario 1 Projections

### Assumptions:

- Baseline conditions (see slide 3)
- Additional water supply:
  - Eastern and Western Nueces Well fields producing 28 MGD starting May 2026
    - 7% channel loss in river
    - Second TCEQ Bed and Banks permit required

### Water Supply Projections:

Level 1 Water Emergency*	Last Month without Storage	
	Choke Canyon	Lake Corpus Christi
May 2027	May 2027	November 2027



# Water Supply Scenarios

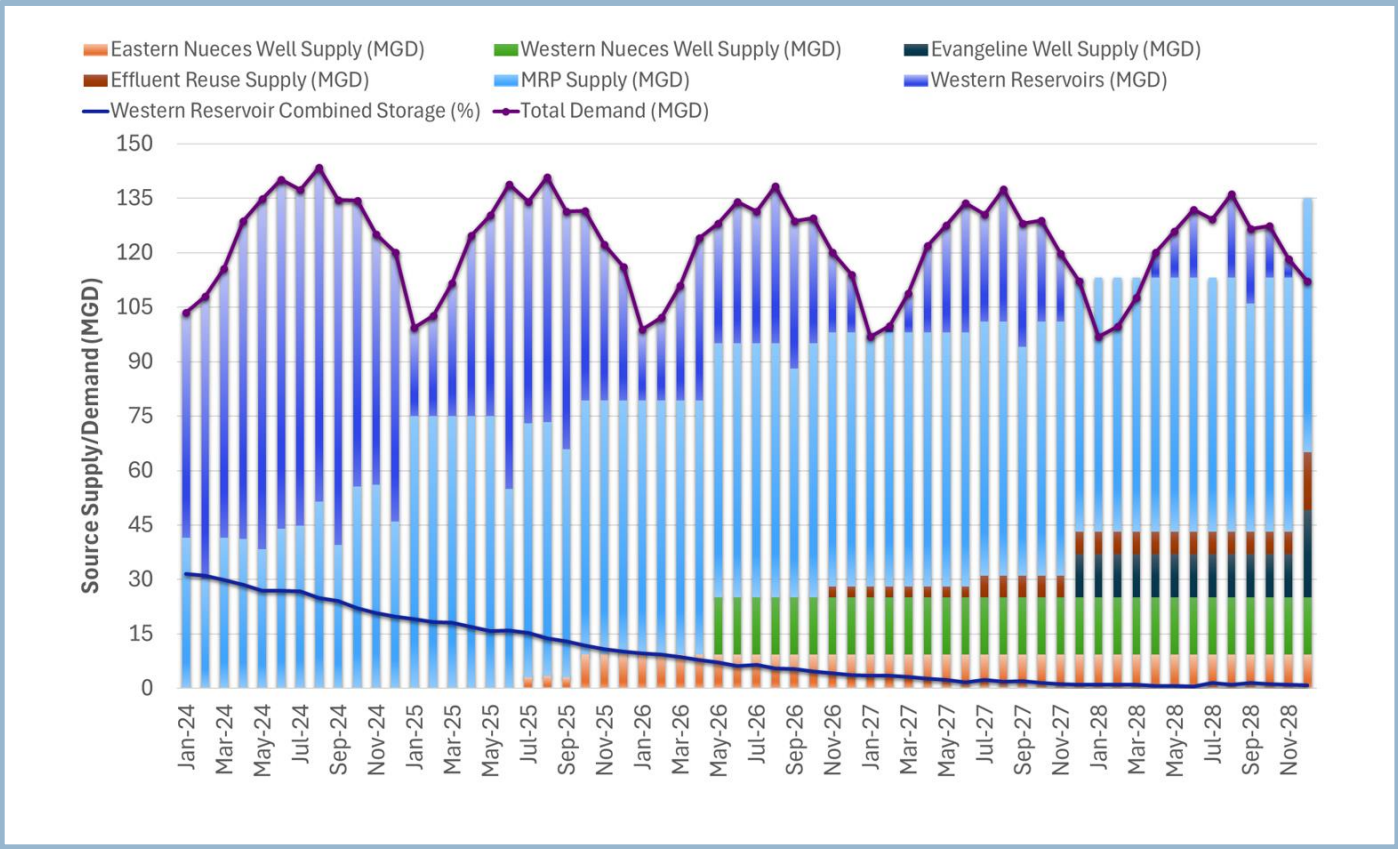
## Scenario 2 Projections

### Assumptions:

- Baseline conditions (see slide 3)
- Additional water supply:
  - Eastern and Western Nueces Well fields producing 28 MGD starting May 2026
    - 7% channel loss in river
    - Second TCEQ Bed and Banks Permit Required
  - Evangeline permits obtained, wells producing 12 MGD by Dec 2027 and additional 12 MGD by December 2028
  - Effluent Reuse 3 MGD Starting Nov 2026 and additional 13 MGD by December 2028

### Water Supply Projections:

Level 1 Water Emergency*	Last Month without Storage	
	Choke Canyon	Lake Corpus Christi
December 2027	May 2027	May 2028



# Water Supply Scenarios

## Scenario 3 Projections

### Assumptions:

- Baseline conditions (see slide 3)
- Additional water supply:
  - Eastern and Western Nueces Well fields producing 28 MGD starting May 2026
    - 7% channel loss in river
    - Second TCEQ Bed and Banks Permit Required
  - Evangeline permits obtained, wells producing 12 MGD by Nov 2026 and additional 12 MGD by December 2027
  - Effluent Reuse 3 MGD Starting July 2027 and additional 13 MGD by December 2028

### Water Supply Projections:

Level 1 Water Emergency*	Last Month without Storage	
	Choke Canyon	Lake Corpus Christi
Not Triggered	August 2027	

