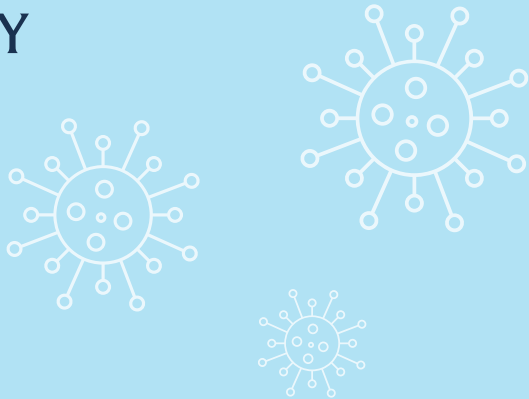


BRINGING OUR STUDENTS BACK AND OFFERING BEST-IN-CLASS CARE IN A COVID-19 WORLD.



THE UNIVERSITY
OF ARIZONA

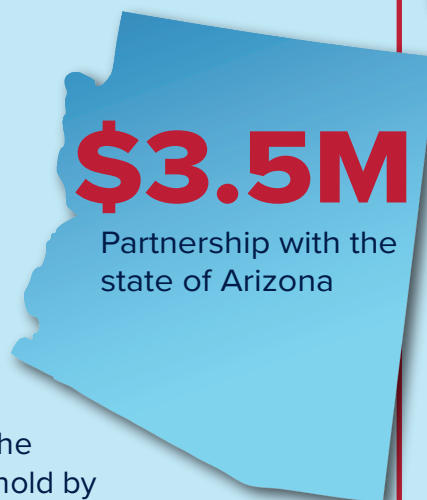
The University of Arizona is working in collaboration with the state of Arizona and national experts to create a flexible learning environment this fall.



2 Trace

- **Traditional** contact tracing by UArizona College of Public Health
- Digital **app-based contact tracing** technology by Apple & Google
- **Self-reporting** with AZCOVIDTXT.ORG*

* Through AZCOVIDTXT, people can report the health and wellness condition in their household by completing short surveys on their cellphone.



3 Treat



- Those who have **tested positive** for **COVID-19** and those **at risk**
- **Minimal** personal contact
- **Alternative** building floor plans
- **Modified** class environment
- Campus Health **enhanced care**



► **FREE & VOLUNTARY** Testing for cases of **COVID-19** and antibodies

- COVID-19 swab test for current infection
- COVID-19 saliva test for current infection (in development at UArizona)
- COVID-19 antibody test to measure potential immunity

1 Test

Pima County

3,000 Pima County health care workers and first responders antibody testing

1,500 Pima County residents, including university students currently residing on campus or in the county antibody testing

Test

State of Arizona

250,000 State of Arizona health care workers and first responders antibody testing

Test

Campus Community

45,000 UArizona students antibody testing

15,000 UArizona faculty and staff antibody testing

